

GRAND DESIGNS AUSTRALIA

**PETER
MADDISON**
ANSWERS
YOUR QUESTIONS

23

IDEAS TO
**BRING IN
MORE LIGHT**
From structural
changes to
lighting options

Life
Style.

UNIVERSAL
MEDIACO

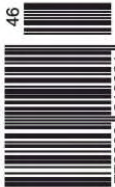
Issue 9.5

AUS\$9.95*

NZ\$12.99 (Incl. GST)

46

ISSN: 2200 - 2197



9 772200 219001

EURO TRIP

European style in
Australian homes

**FUTURE-PROOF
YOUR HOME**

and enjoy it
for years to come

15

WAYS TO HELP
YOU CREATE THE
**PERFECT
HOME OFFICE**

ONE WITH NATURE

Good design doesn't have to cost the earth

BAYSIDE ESCAPE



This home reimagines suburban residential typology with a structural form and material palette that pays homage to its locale while embracing a new era of coastal living

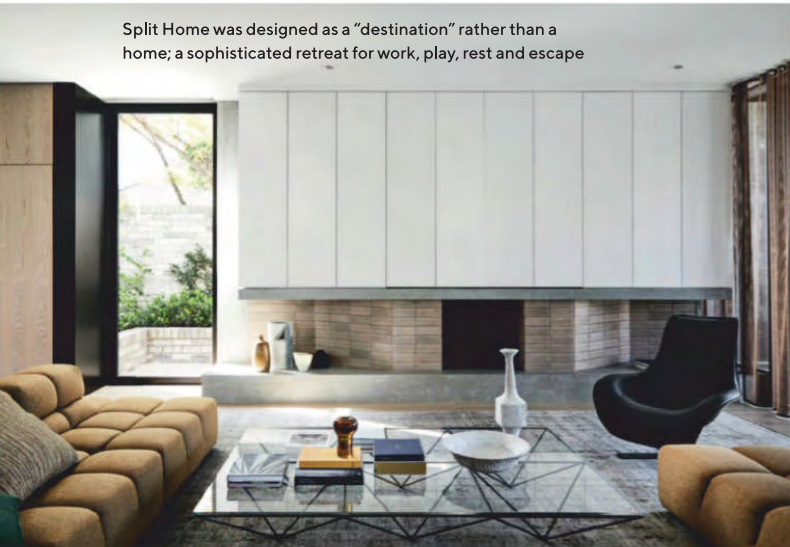
WORDS KARSHA GREEN **PHOTOGRAPHY** SHARYN CAIRNS

From the dunes to the bathing boxes, this home's sculptural architecture was inspired by its surrounding coastal environment





Split Home was designed as a “destination” rather than a home; a sophisticated retreat for work, play, rest and escape



Various architectural features have been chosen to create a seamless connection between the home and the natural environment that surrounds it



DETAILS

HOUSE Split Home
LOCATION Brighton, Victoria
DATE COMMENCED December 2016
DATE COMPLETED December 2019



a home for work, play, rest and escape; that is Split Home. Located in Melbourne's affluent coastal suburb of Brighton, Split Home has envisioned a new residential typology where all elements of life can come together and one can escape from the confines of quintessential suburbia, in what this homeowner describes as a "destination rather than a home".

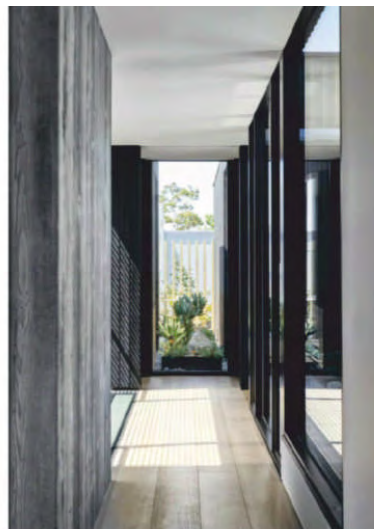
Originally, a single-storey, '70s, fibro-style home with an overbearing solid brick fence stood here. Now what replaces it is a sculptural retreat inspired by its bayside

setting. A place to escape to and a home that could adapt to all seasons were this homeowners' prerequisites. With a background in timber floor engineering, the home also needed to have a highly tactile palette with a connection to nature and its bayside context. This locale, including its elevated dunes, coastal vegetation and the iconic Brighton bathing boxes were the main inspiration for the sculptural form and natural textures that make up Split Home.

"The design's composition and form took inspiration from Brighton's dynamic coastline where decay, fragmentation and unique formations, such as the coastal



The home's material palette is highly tactile, inspired by its coastal surroundings and providing this ultra-modern home with a warm, inviting feel



EDITOR'S FAVOURITE

THE FRACTURED ALUMINIUM FACADE THAT IS REMINISCENT OF PERFORATIONS CAUSED BY THE SEA OVER MANY YEARS

split, were sampled to alleviate traditional barriers," says Luke Seidler of Seidler Group.

Designed as a family home with the essence of a holiday residence and adults' retreat, Split Home features a six-car garage, lobby, laundry, wine cellar, fully equipped bar and nightclub with viewing window to the pool, pool deck and garden, open-plan living, kitchen and dining space, rooftop gardens, rumpus and den, as well as four self-contained bedroom pods and six bathrooms. These "resting pods" were a homage to Brighton's bathing boxes and are completely self-contained with ensuite, walk-in robe, and their own outlook of luscious coastal foliage.



The kitchen continues the home's tactile material palette, and shows clear evidence of the homeowners' history and passion for timber





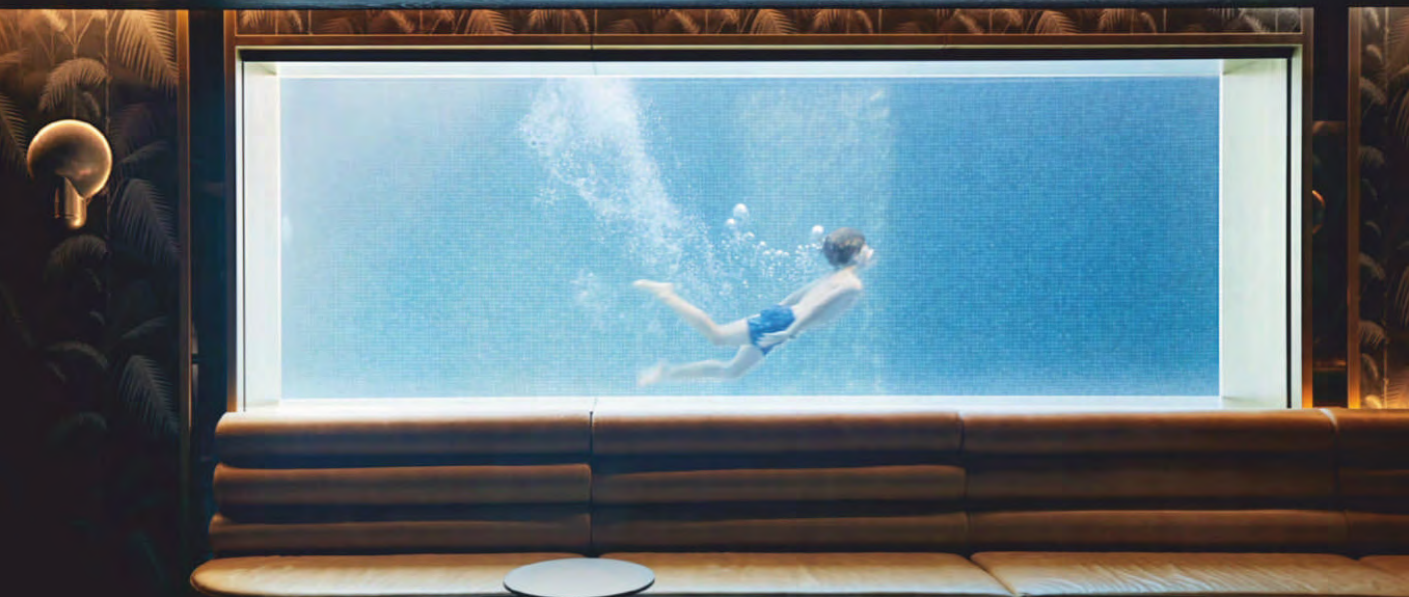
“The master suite situated at the apex of the home was inspired by the morphology of a coastal split, its unique trajectory and poetic form project — unconventionally towards the south — allowing light to flood the pool deck below and its curved southern perimeter drawing southern breezes deep into the upper courtyard,” says Luke.

The coastal environment and the homeowners’ love of all things timber governed the material palette for Split Home, with tactile properties and durable structure at the top of the list. Charred, pre-aged timbers, timber-look aluminium battens and textured concrete were chosen for their various properties. The fractured aluminium facade is “decayed by a metaphoric and literal sea of perforations, generated via a parametric script, presenting a robust yet softened skin as if decomposed by nature”.

Luke adds that the project’s materiality sought to capture the dynamic properties of nature as a moment in time while ensuring the building would withstand the test of time. “Materials that do not patina or deteriorate were therefore selected to assure longevity,” he says.

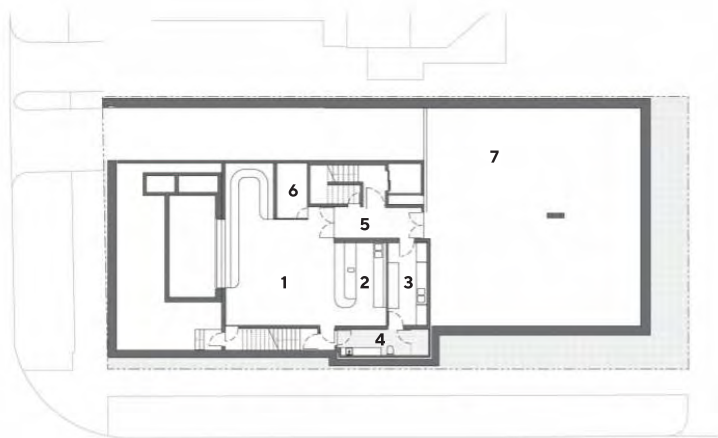
“Retreat, not only from modernity and the man made, but within the home itself, has become paramount, driven by our longing to reconnect with nature, community and city. Split Home invigorates these relationships, enabling an inherent connection to its locality intertwined with nature to inspire the public realm and rejuvenate life within the home.” 🏡



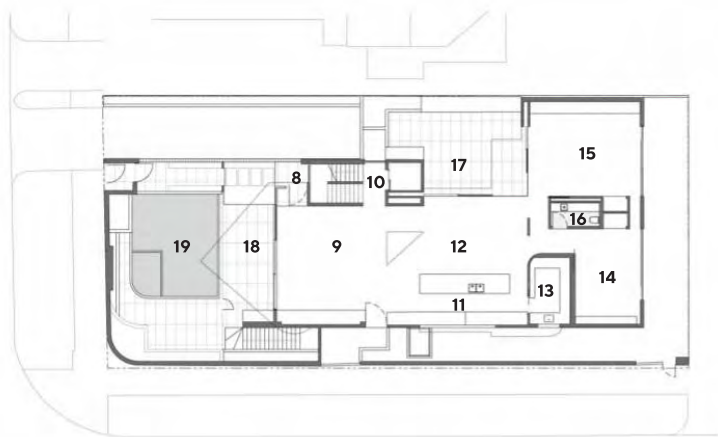


A large glass window looking into the pool from the home's personal nightclub provides a unique, three-dimensional artwork while also infiltrating the dim space with blue-tinted, natural light

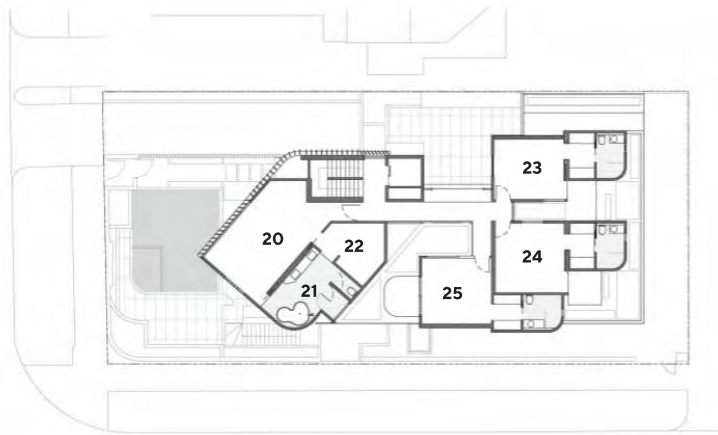




BASEMENT FLOOR PLAN



GROUND FLOOR PLAN



FIRST FLOOR PLAN

LEGEND

- 1 Club
- 2 Bar
- 3 Laundry
- 4 Bathroom
- 5 Lobby
- 6 Cellar
- 7 Garage
- 8 Entry
- 9 Living
- 10 Lift/Stair
- 11 Kitchen
- 12 Dining
- 13 Butler's pantry
- 14 Den
- 15 Rumpus
- 16 Powder
- 17 Alfresco
- 18 Pool deck
- 19 Pool
- 20 Master bedroom
- 21 Master ensuite
- 22 Master robe
- 23 Bedroom suite 1
- 24 Bedroom suite 2
- 25 Bedroom suite 3

PROJECT TEAM

ARCHITECT Seidler Group
(Luke Seidler), seidlergroup.com.au

BUILDER Homeowner

INTERIOR DESIGNER Design by
Golden, designbygolden.com.au

SERVICES

Structural steel LVB Structural

Landscape Ric Day and Co

Pool Lacus Consulting, Springwater Pools

FIXTURES & FITTINGS

Timber flooring French Oak Floors

Timber cladding Eco Timber Group

Aluminium louvres Louvretec

Windows Creative Windows

Joinery Build Top Cabinets

Steel screens Struc Steel

Plumbing N2N Plumbing

The master suite was unconventionally placed at the south end of the home to allow light to flood the pool deck and entertaining area below

