

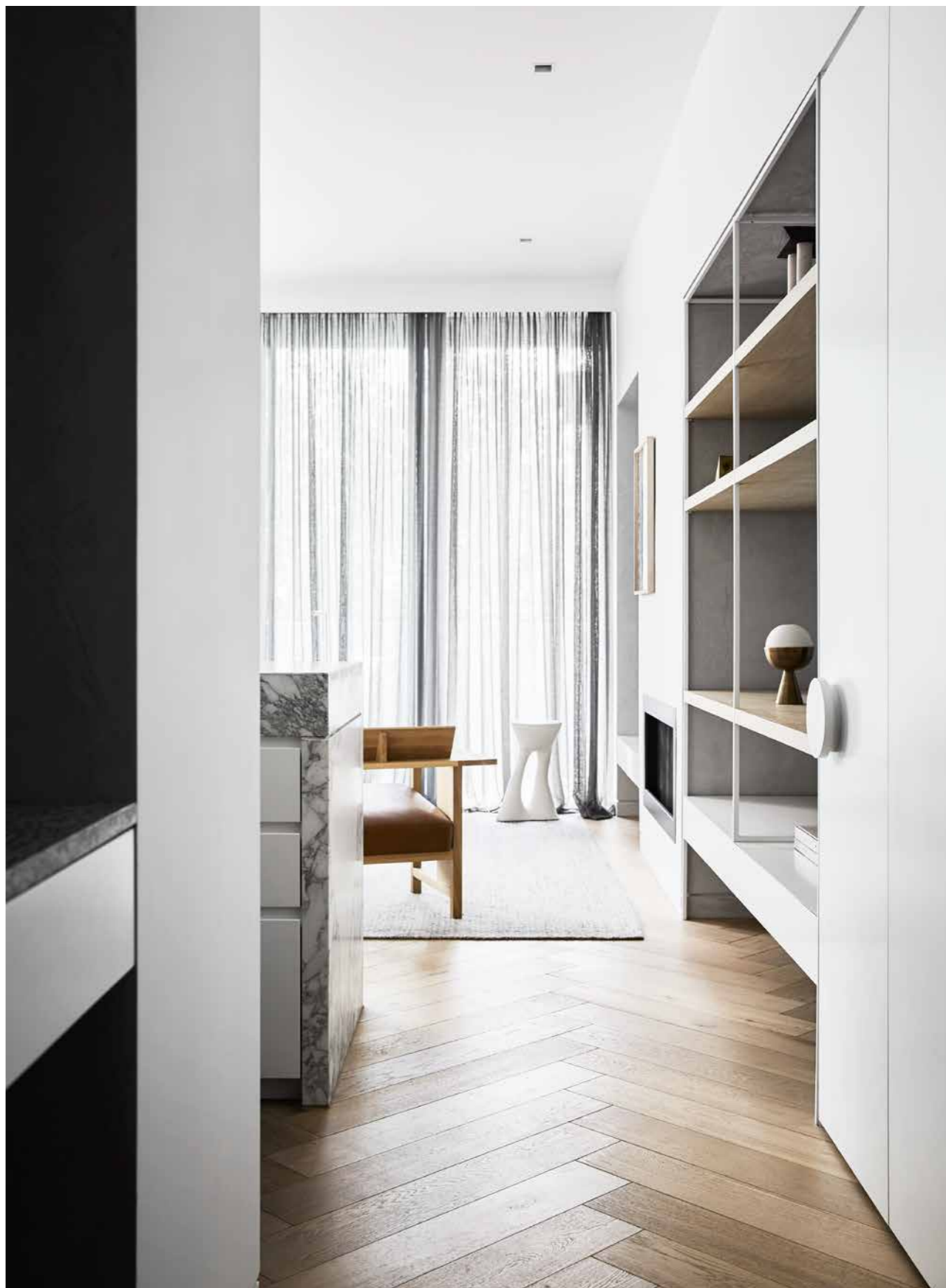
OPEN
DAYS
GOLDEN

PHOTOGRAPHS SHARYN CAIRNS





'Lennon' sofa from Kelektiv. 'Flo' floor lamp from ECC Lighting + Furniture. 'Tati' coffee table from Great Dane. 'Clerici' lounge chair from District. Stools by Hunt Furniture. Artworks by Sean Meilak from Niagara Galleries.



THIS PAGE, FROM LEFT 'Tati' coffee table from Great Dane. 'Alby' ottoman from Jardan. Artwork by Sean Meilak. OPPOSITE PAGE 'Clerici' lounge chair from District.



Gubi side table from Cult. Custom mirror and joinery by Osiris Furniture. Artwork and sculpture by Sean Meilak from Niagara Galleries. A mix of chairs from Apato, Castorina & Co. and Cult surround the table. Large artwork by Hannah Fox.

THE GOLDEN DUO, Kylie Dorotic and Alicia McKimm, created an intimate, homely vibe for this South Yarra apartment to put the owners at ease the moment they walk in the door.

What was the client's brief? They live on the Victorian coast, but wanted this apartment to feel like their inner-city home, and briefed us to finesse and soften the space. *What were the challenges of the space and how did you resolve them with your design scheme?* We inherited the shell which brought challenges, including limitations of size. This meant we had to enhance the sense of space in every design decision, from the subtle and clean colour palette to clever use of detail. *How would you describe the completed interior?* It is considered and understated throughout, with every space maximised using smart storage solutions, subtle decoration and a focus on detail. A stone ledge and polished plaster niche welcomes you on entry, and is the perfect drop-off zone for keys and mail, while also allowing the owners to personalise the space with photos and objets. Next there is a cloak cupboard for the owners and their guests. Finishes and textures were deliberately tonal: the grey-on-grey palette creates a soft and seamless interior and a subtle finish. We introduced darker finishes via new paint, carpet, window treatments and wax-plaster on surfaces to create depth and drama and a more intimate space. The selection of sheer curtains was soft, tonal to the apartment and has a touch of Parisian style, with the fabric a contemporary take on traditional linen. *What are some of your favourite design elements?* Function was key to the design but the beauty of the end result came from a strong focus on the small details. For example, the living room joinery pushed all the boundaries. Featuring the finest frame achievable with minimal fixings sees the timber shelves held only by the simplicity of a welded pin detail. A full-height custom mirror adds to the sense of openness and reflects the heritage facade and tree-lined street beyond. We integrated the mirror into the architecture, having it custom designed to fit and fixed permanently onto the wall. New curved walls both complement the asymmetric apartment and open up the dining area. *Were the owners happy with the execution? How do they use the space?* They were very pleased we met their brief for a warm, inviting home. It was important that everything from the soft furnishings to the modern and innovative joinery made this space welcoming and unlike any other run-of-the-mill apartment. It is the perfect inner-city haven for the beach-residing owners and they use it as a home-away-from-home when they're in Melbourne. designbygolden.com.au



THIS PAGE AND
OPPOSITE RIGHT
Artwork by Hannah Fox.
Artemide "Tizio" lamp
and Cultiver bed linen.
OPPOSITE PAGE Chair
from Apato and client's
own table with a bowl
from Safari Living and
totem by Jo Wilson
from Criteria. Mantis
wall light from
Luke Furniture.